

Oracle APEX for data management, data consolidation, data integration

Max Münch, Groke Tueren und Tore GmbH
Wolfgang Scherrer
infomArt GmbH
wscherrer@infomart.de
+491716947441

The Customer



ALUMINIUM ENTRANCE DOORS

**KREADOOR DOOR
CONFIGURATION TOOL**

ACCESS SYSTEMS

THE COMPANY

SERVICE

DEALER AREA

CONTACT

IMPRINT

DATA PROTECTION
DECLARATION

GROKE EN • Groke entrance doors, doors

English



GROKE TÜREN & TORE GMBH

Wikingerstraße 10
D-76189 Karlsruhe

Phone 0721/5982 - 0

Fax 0721/5982 - 55

info@groke.de

A company of the
SOMMER Group



Facebook

Kreadoor door configuration

KREADOOR DOOR CONFIGURATION TOOL

**"Progress is not about improving what already exists; it's about aligning yourself with what will be."
Khalil Gibran**

What is the first, most important thing you notice about a door? Clearly, it's the design. Only then do issues such as the insulation value, sound insulation and security come into consideration. Of course, our aluminium entrance doors shine in all of these respects.

To make your decision for a Groke door easier, we offer you the Kreadoor configuration tool, which allows you to configure your door to your satisfaction and insert it into a photo of your home in exactly the right size. You thus know right from the outset how well a Groke door will suit your house.

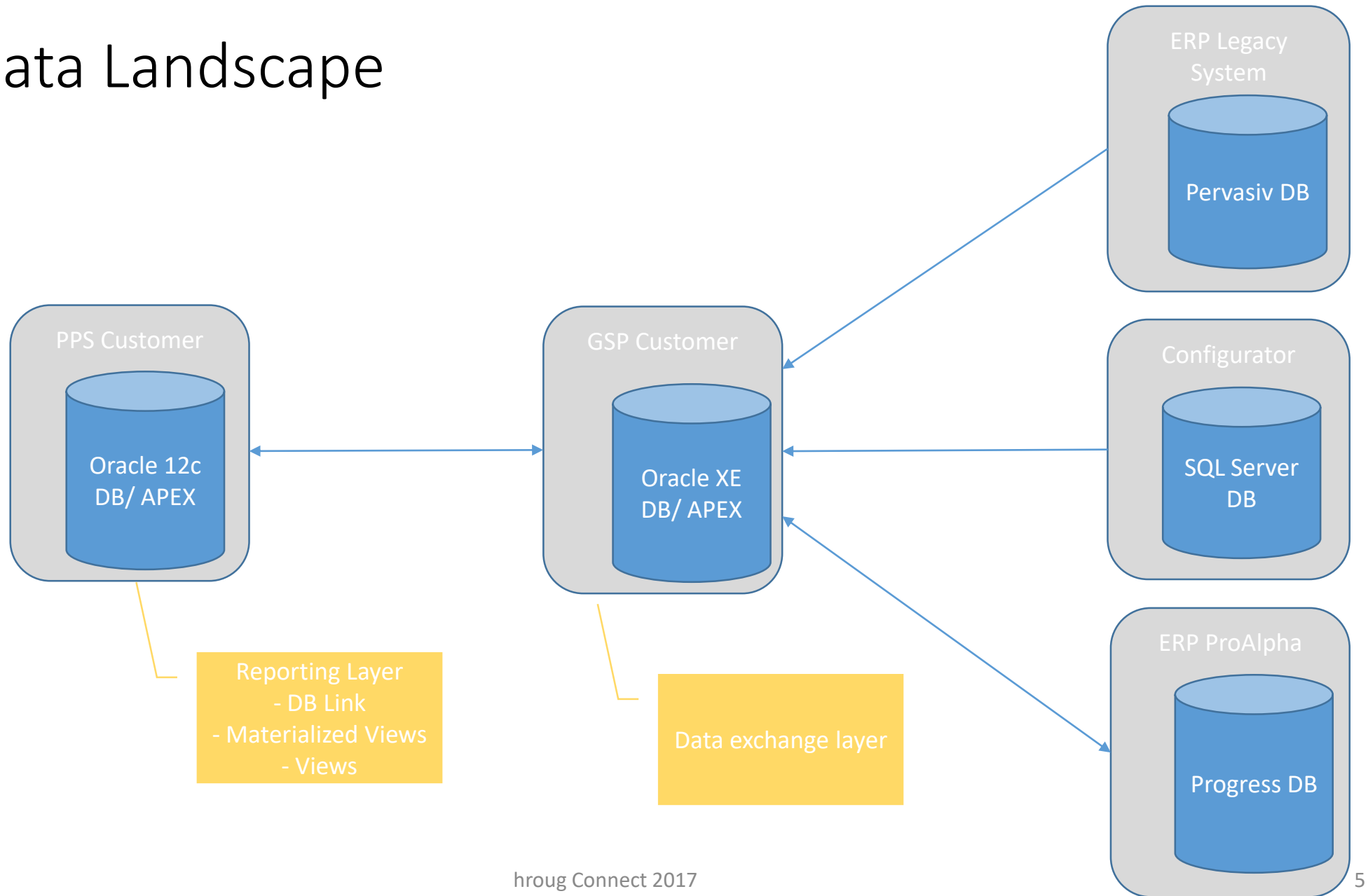
The Requirement

- Management Reporting Solution
 - Easy to create and use AdHoc reports
 - Fast access on real time information
 - Query definition without SQL Knowledge
 - Cost efficient
 - Device independent
 - Excel export

The Problem

- Different Operating Systems
 - Windows Server 2012
 - Oracle Linux
 - Windows Server 2003
- Outdated Solution
 - Old DB Server (Pervasiv)
 - Solution Supplier not existing anymore
 - Cobol / C Source Code incomplete
- Effort and Cost

The Data Landscape



Connection Setup Process

- Heterogeneous Service is a not to easy setup. You have to ensure that naming conventions are correct and that all required entries are done in the expected order ! Ensure that you create backups from all files you like to chance !



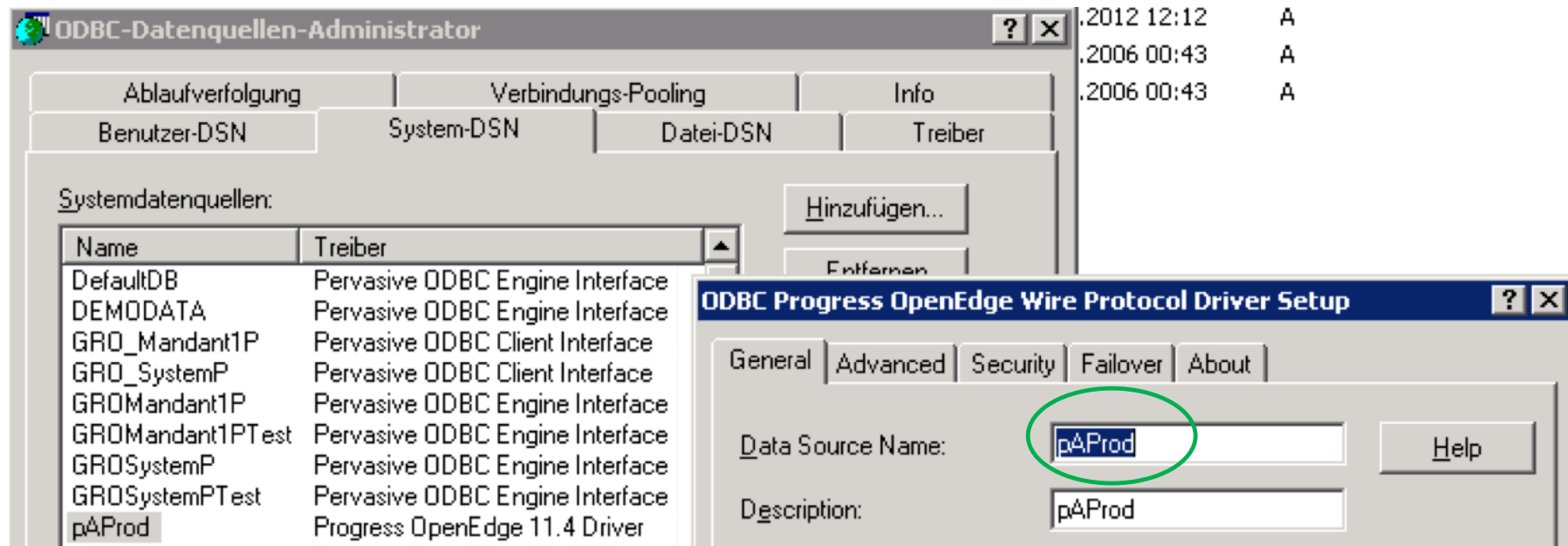
- Install and setup the ODBC client, test setup !

- Create the required entries in HS directory from your DB server installation.

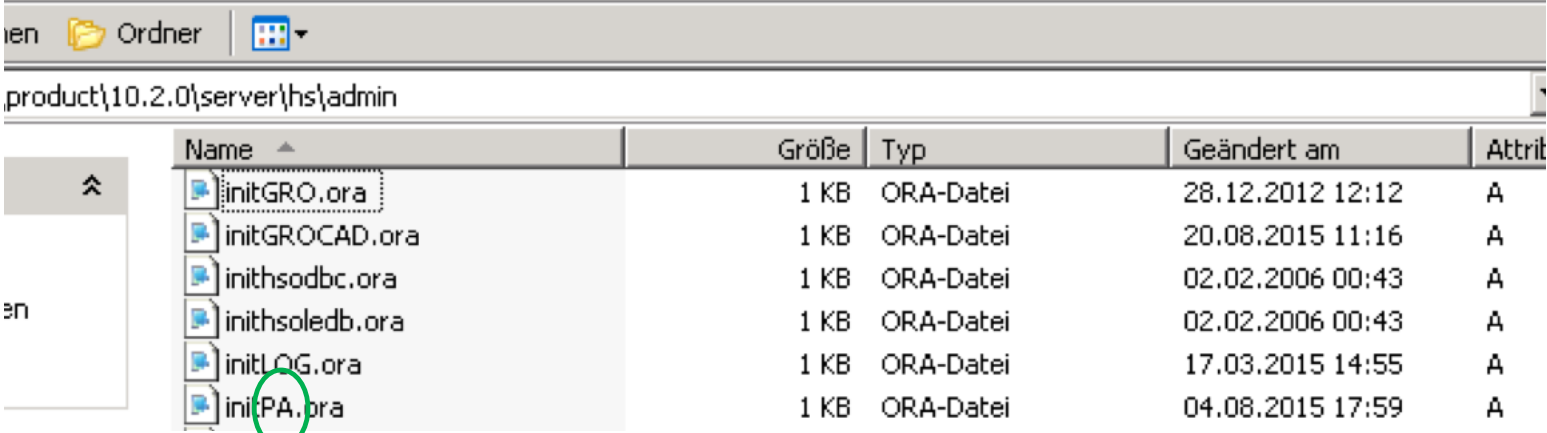
- Make entries in listener.ora in your server network/Admin directory !

- Make entries in tnsnames.ora in above mentioned directory !

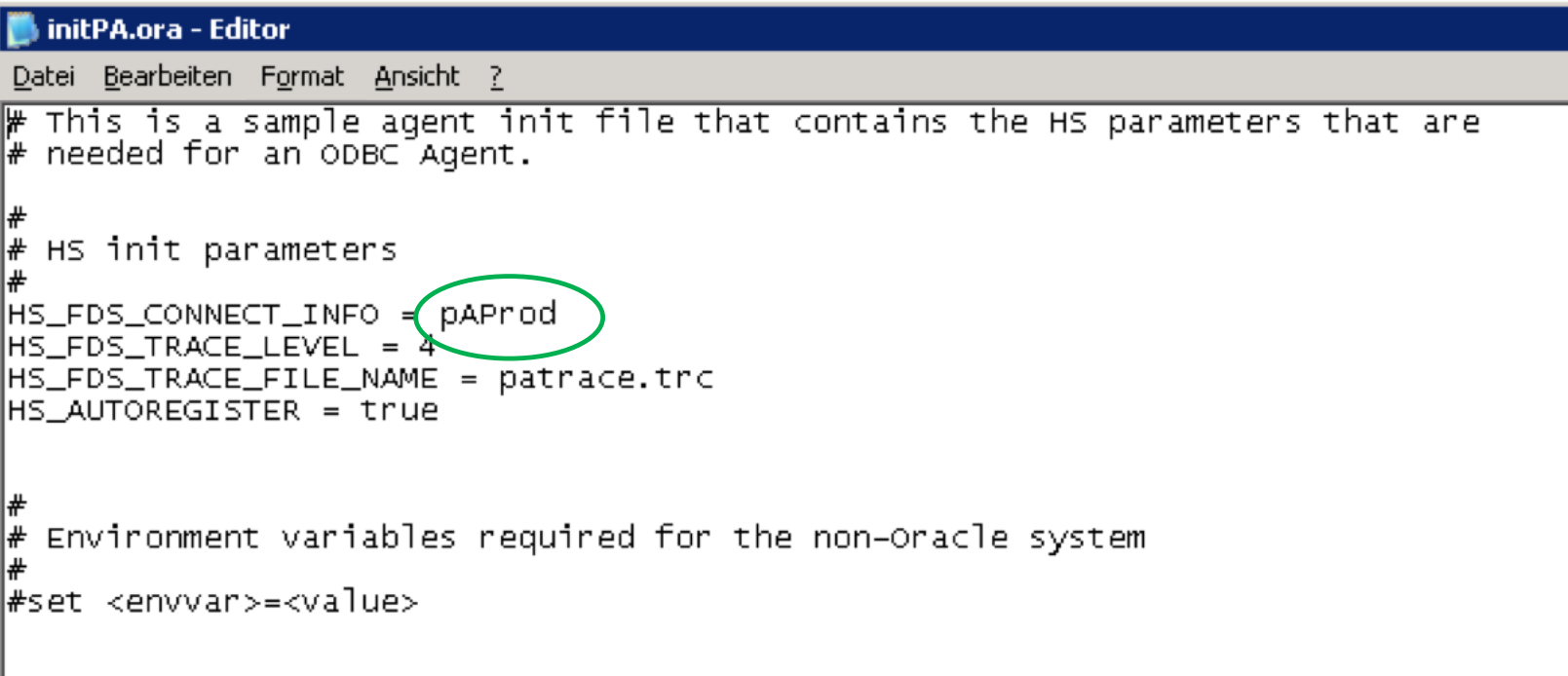
Setup ODBC



Setup HS



Name	Größe	Typ	Geändert am	Attrit
initGRO.ora	1 KB	ORA-Datei	28.12.2012 12:12	A
initGROCAD.ora	1 KB	ORA-Datei	20.08.2015 11:16	A
inithsodbc.ora	1 KB	ORA-Datei	02.02.2006 00:43	A
inithsoledb.ora	1 KB	ORA-Datei	02.02.2006 00:43	A
initLOG.ora	1 KB	ORA-Datei	17.03.2015 14:55	A
initPA.ora	1 KB	ORA-Datei	04.08.2015 17:59	A



```
initPA.ora - Editor
Datei Bearbeiten Format Ansicht ?
# This is a sample agent init file that contains the HS parameters that are
# needed for an ODBC Agent.
#
# HS init parameters
#
HS_FDS_CONNECT_INFO = pAProd
HS_FDS_TRACE_LEVEL = 4
HS_FDS_TRACE_FILE_NAME = patrace.trc
HS_AUTOREGISTER = true
#
# Environment variables required for the non-Oracle system
#
#set <envvar>=<value>
```


Setup Listener

```
listener.ora - Editor
Datei Bearbeiten Format Ansicht ?
SID_LIST_LISTENER =
  (SID_LIST =
    (SID_DESC =
      (SID_NAME = PLSExtProc)
      (ORACLE_HOME = C:\oracle\app\oracle\product\10.2.0\server)
      (PROGRAM = extproc)
    )
    (SID_DESC =
      (SID_NAME = CLRExtProc)
      (ORACLE_HOME = C:\oracle\app\oracle\product\10.2.0\server)
      (PROGRAM = extproc)
    )
    (SID_DESC =
      (SID_NAME = GRO)
      (ORACLE_HOME = C:\oracle\app\oracle\product\10.2.0\server)
      (PROGRAM = hsodbc)
    )
    (SID_DESC =
      (SID_NAME = GROCAD)
      (ORACLE_HOME = C:\oracle\app\oracle\product\10.2.0\server)
      (PROGRAM = hsodbc)
    )
    (SID_DESC =
      (SID_NAME = LOG)
      (ORACLE_HOME = C:\oracle\app\oracle\product\10.2.0\server)
      (PROGRAM = hsodbc)
    )
    (SID_DESC =
      (SID_NAME = PA)
      (ORACLE_HOME = C:\oracle\app\oracle\product\10.2.0\server)
      (PROGRAM = hsodbc)
    )
  )
LISTENER =
  (DESCRIPTION_LIST =
    (DESCRIPTION =
      (ADDRESS = (PROTOCOL = IPC)(KEY = EXTPROC_FOR_XE))
      (ADDRESS = (PROTOCOL = TCP)(HOST = gsrv001.groke.de)(PORT = 1521))
    )
  )
DEFAULT_SERVICE_LISTENER = (XE)
```

Setup TNSNAMES

Points to HS
Setup !
initPA.ora

```
tnsnames.ora - Editor
Datei Bearbeiten Format Ansicht ?

XE =
  (DESCRIPTION =
    (ADDRESS = (PROTOCOL = TCP)(HOST = gsrv001.groke.de)(PORT = 1521))
    (CONNECT_DATA =
      (SERVER = DEDICATED)
      (SERVICE_NAME = XE)
    )
  )
)

FFSP =
  (DESCRIPTION =
    (ADDRESS = (PROTOCOL = TCP)(HOST = 10.7.200.14)(PORT = 1521))
    (CONNECT_DATA =
      (SERVER = DEDICATED)
      (SERVICE_NAME = orc1.groke.de)
    )
  )
)

MYKONHT =
  (DESCRIPTION =
    (ADDRESS = (PROTOCOL = TCP)(HOST = gsrv001.groke.de)(PORT = 1521))
    (CONNECT_DATA =
      (SID = GRO))
      (HS = OK)
    )
  )
)

GROCAD =
  (DESCRIPTION =
    (ADDRESS = (PROTOCOL = TCP)(HOST = gsrv001.groke.de)(PORT = 1521))
    (CONNECT_DATA =
      (SID = GROCAD))
      (HS = OK)
    )
  )
)

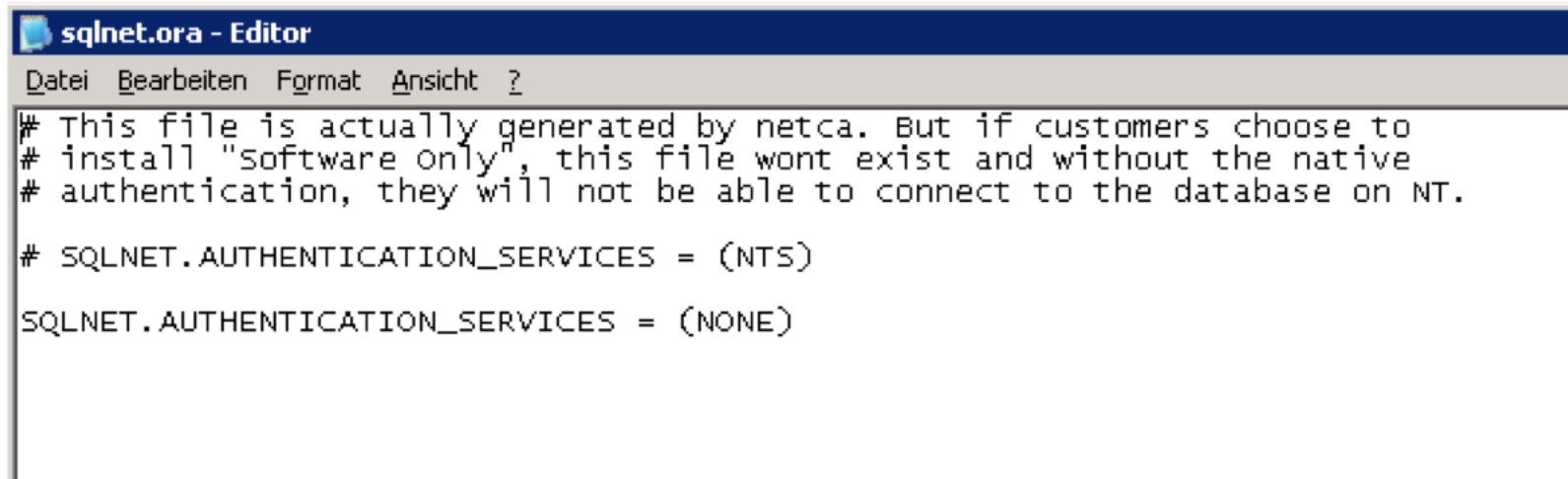
LOGIKAL =
  (DESCRIPTION =
    (ADDRESS = (PROTOCOL = TCP)(HOST = gsrv001.groke.de)(PORT = 1521))
    (CONNECT_DATA =
      (SID = LOG))
      (HS = OK)
    )
  )
)

PA =
  (DESCRIPTION =
    (ADDRESS = (PROTOCOL = TCP)(HOST = gsrv001.groke.de)(PORT = 1521))
    (CONNECT_DATA =
      (SID = PA))
      (HS = OK)
    )
  )
)

SAOUGS =
  (DESCRIPTION =
    (ADDRESS = (PROTOCOL = TCP)(HOST = gsrv001.groke.de)(PORT = 1521))
    (CONNECT_DATA =
      (SID = SAOUGS))
      (HS = OK)
    )
  )
)


```

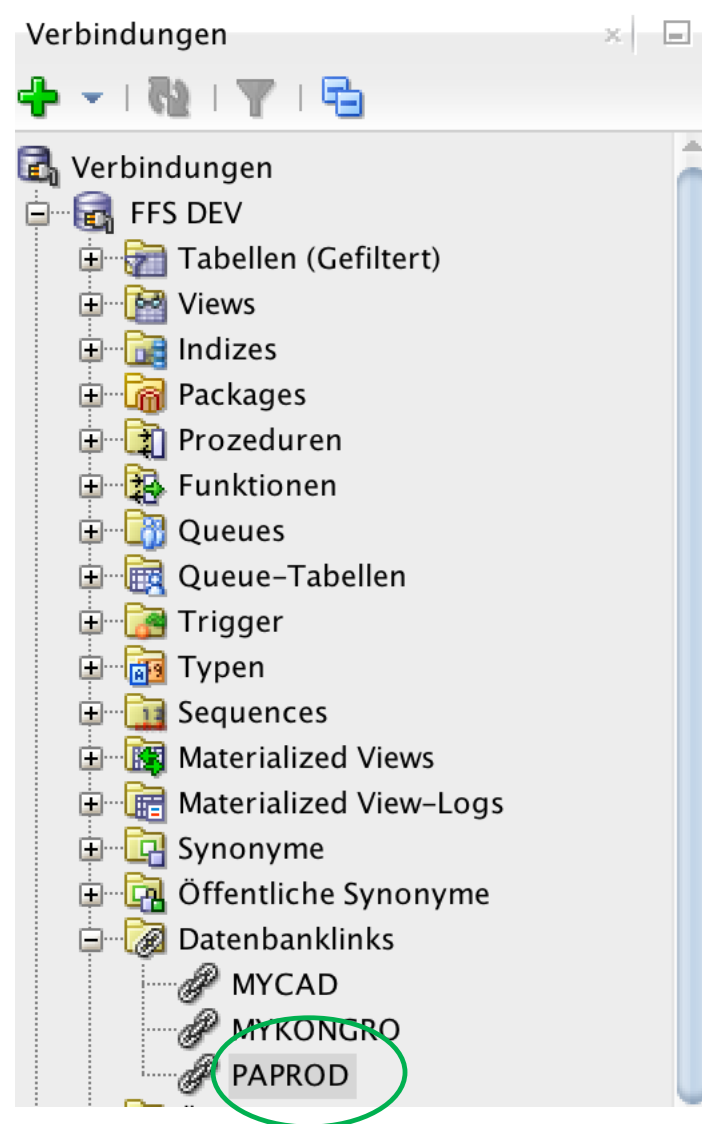
Setup SQLNet



```
sqlnet.ora - Editor
Datei Bearbeiten Format Ansicht ?
# This file is actually generated by netca. But if customers choose to
# install "Software Only", this file wont exist and without the native
# authentication, they will not be able to connect to the database on NT.

# SQLNET.AUTHENTICATION_SERVICES = (NTS)
SQLNET.AUTHENTICATION_SERVICES = (NONE)
```

Setup DB Link



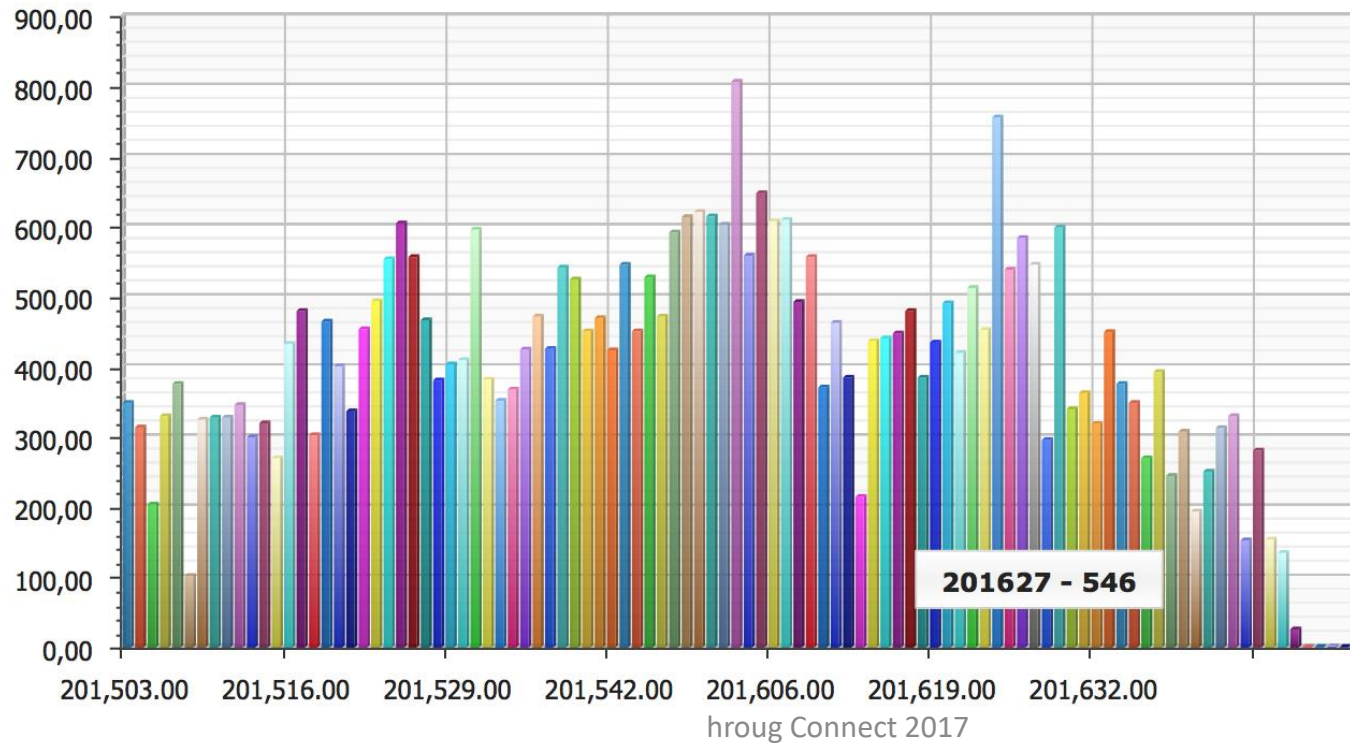
The Result

GROKE [Abmelden](#)

Home Planung Rückmeldung RückHistorie War

Los Berichte 6. Aufträge_KW_Grafik

+ 1 6



Conclusion

- Questions ?
- Comments ?